



**FARONICS™**

**Intelligent Utilities for ABSOLUTE Control**



**FARONICS™**



## **Faronics**

---

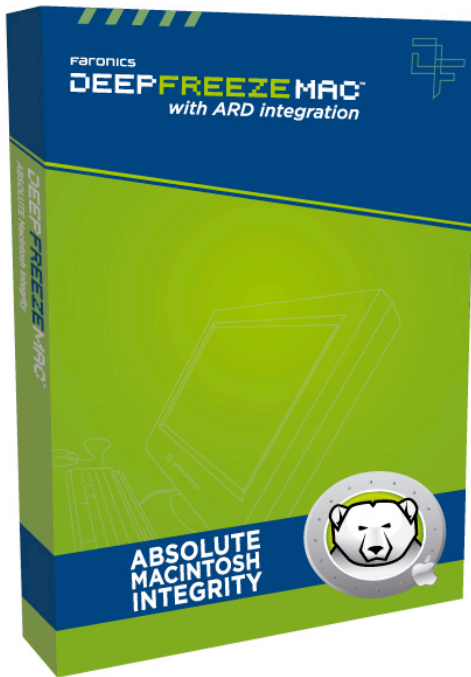
- Company Background
- Where we are now
- Our vision



# FARONICS™



## Faronics Deep Freeze

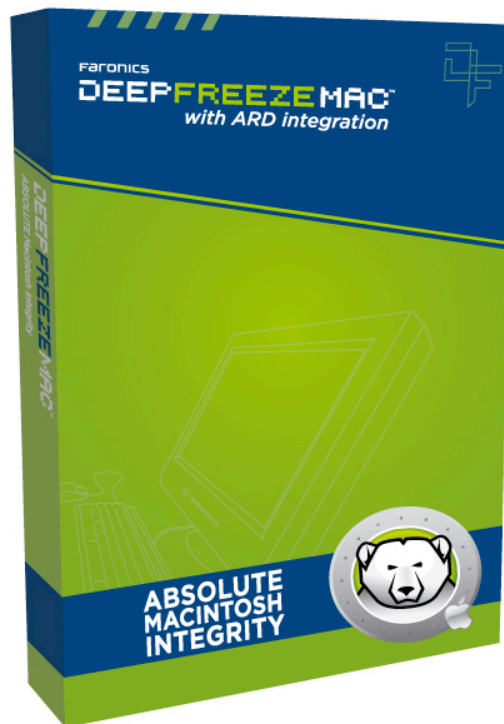


### For Mac and Windows

- Deep Freeze Mac 1.0
- Deep Freeze Mac 2.0
- Dedicated Mac development team



## The Deep Freeze Concept



### The Basics

- Full reboot to restore
- Kernel-level driver loads when you startup the machine.
- No time delay or user-intervention required
- Not an imaging solution.
- All changes eradicated on every reboot.
- Unrestricted user environment.



**FARONICS™**



## Benefits of Deep Freeze Mac



**DEEPFREEZEMAC™**

### Advantages

- The Key: User has full freedom on computer
- More computer uptime
- No software-related service calls or “the quick fix”!
- Compatibility with your existing systems



## A Word on Re-imaging



DEEPPFREEZEMAC™

### Retaining Control

- “Re-image computers when you want to, not when you have to.”
- Boot Camp



**FARONICS™**

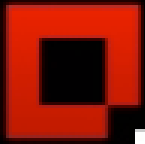


## Who benefits from Deep Freeze Mac?

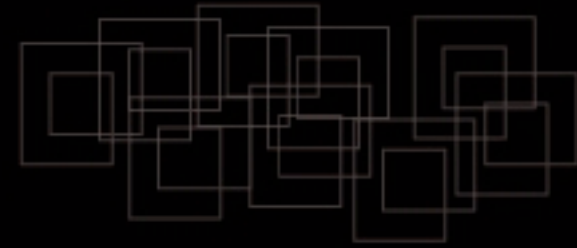
**17,000 Customers**

- K-12 Education
- Higher Education
- Libraries
- Health care facilities
- Government offices
- Corporate facilities
- Anyone with public-access Macs





FARONICS™



DEEPFREEZEMAC™

ABSOLUTE System Integrity





FARONICS™



## Why Deep Freeze on a Mac?



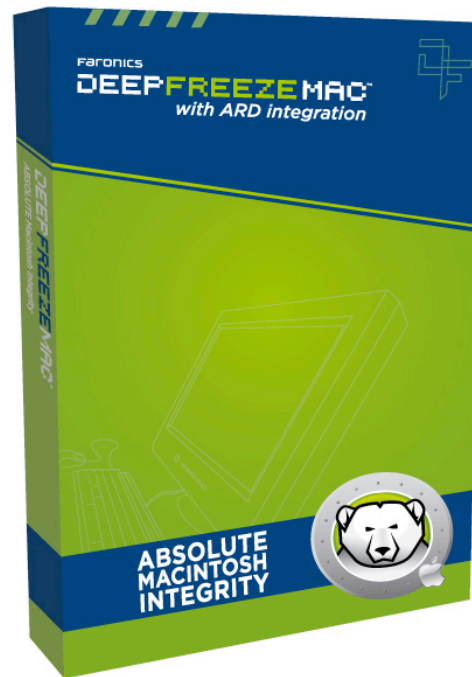
DEEPFREEZEMAC™

### Workstation Protector

- A simple solution
- Open or controlled - you decide
- An additional tool



## Deep Freeze Mac 3.0



### New Features

- Expanded Deep Freeze Assistant
  - ThawSpace capability
  - Maintenance Scheduling
  - Universal Binary
- 
- Compatible with Mac OS X 10.3 and above
  - Fully integrated with Apple Remote Desktop (ARD)



## Deep Freeze Mac Assistant

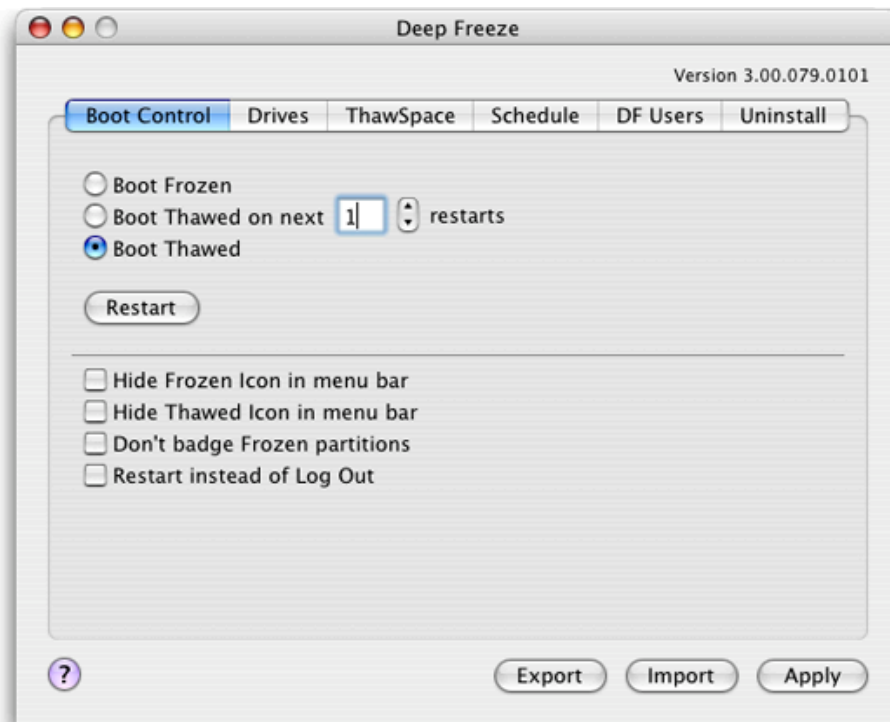


### Customized Installs

- The Deep Freeze Assistant can create unique installation packages to be deployed via ARD or other software deployment solution
- All aspects of your Deep Freeze Mac deployment are able to be pre-configured before you install



## Boot Control

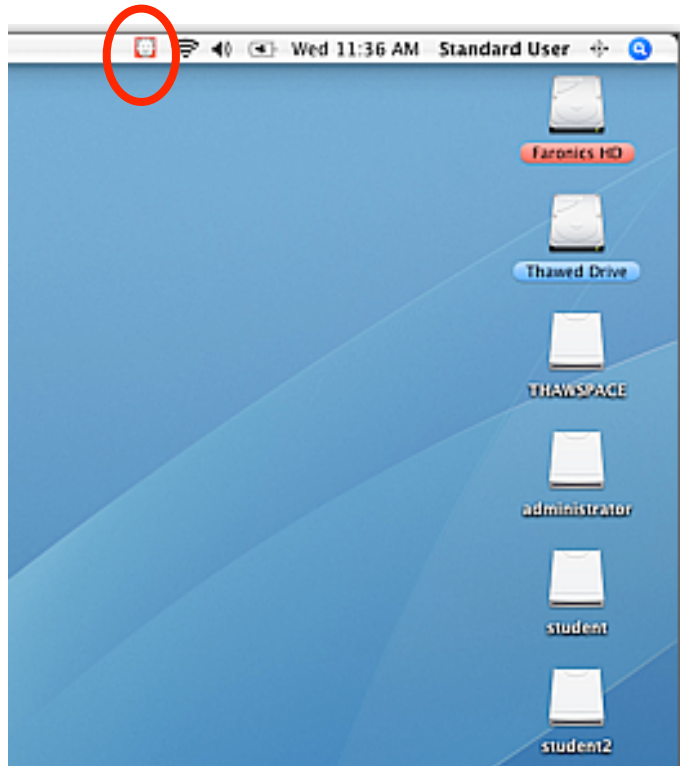


### Boot Control Tab

- Deep Freeze Mac can control the boot condition of your workstations
- Choose from multiple options to reflect software behaviors (badge the Frozen partitions and show or hide program icon in the menu)
- Automatically restart on log out option



## Where Does the Deep Freeze Icon Appear?

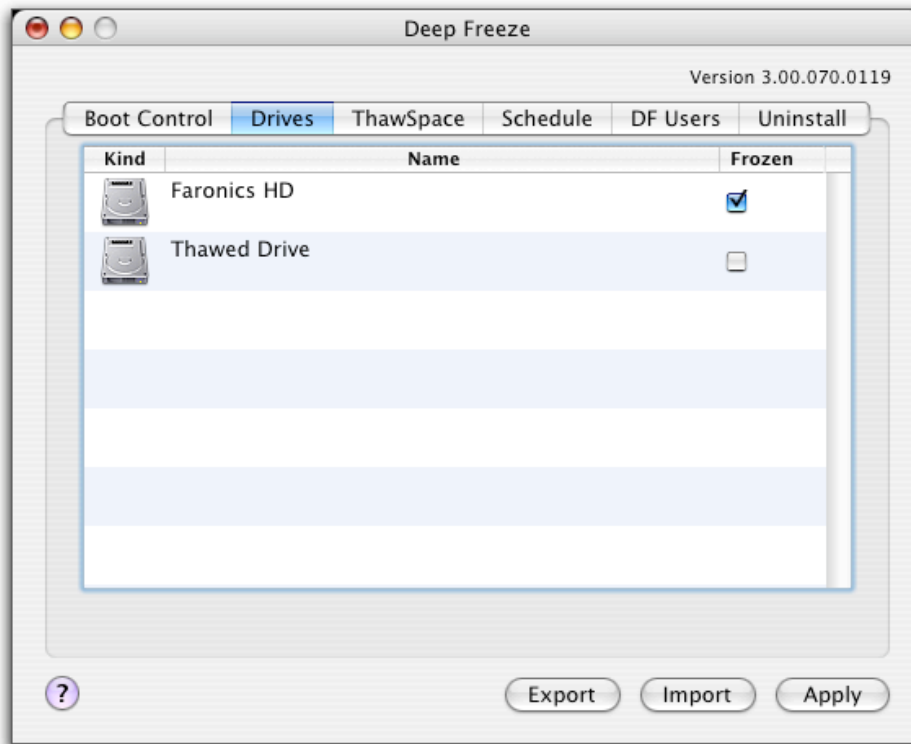


### Deep Freeze Icon

- Deep Freeze icon is accessible from the Menu Bar
- Allows Log in as a Deep Freeze user to make changes to your configuration
- Blue icon means machine is Frozen, red icon means machine is Thawed



## Frozen Drives

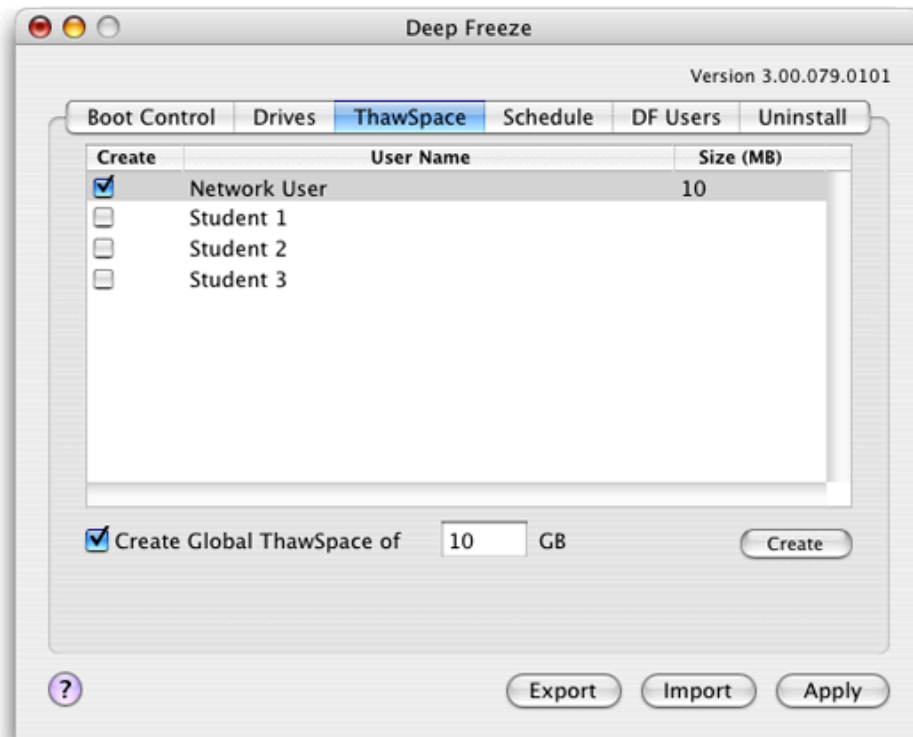


### Drives Tab

- Choose which local drives/volumes you want Frozen and which you want Thawed.



## Configure ThawSpaces

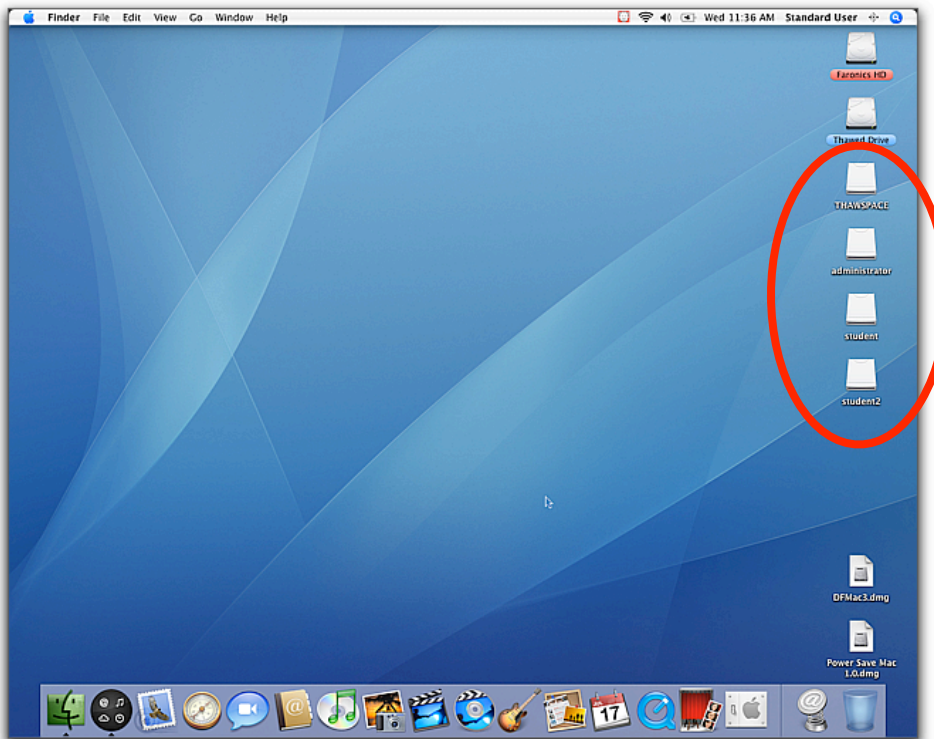


### ThawSpace Tab

- ThawSpace allows data to be saved permanently across reboots on a Frozen system
- ThawSpace can be user based or global (accessible to all users)
- ThawSpace size can be customized



## How Do ThawSpaces Appear?



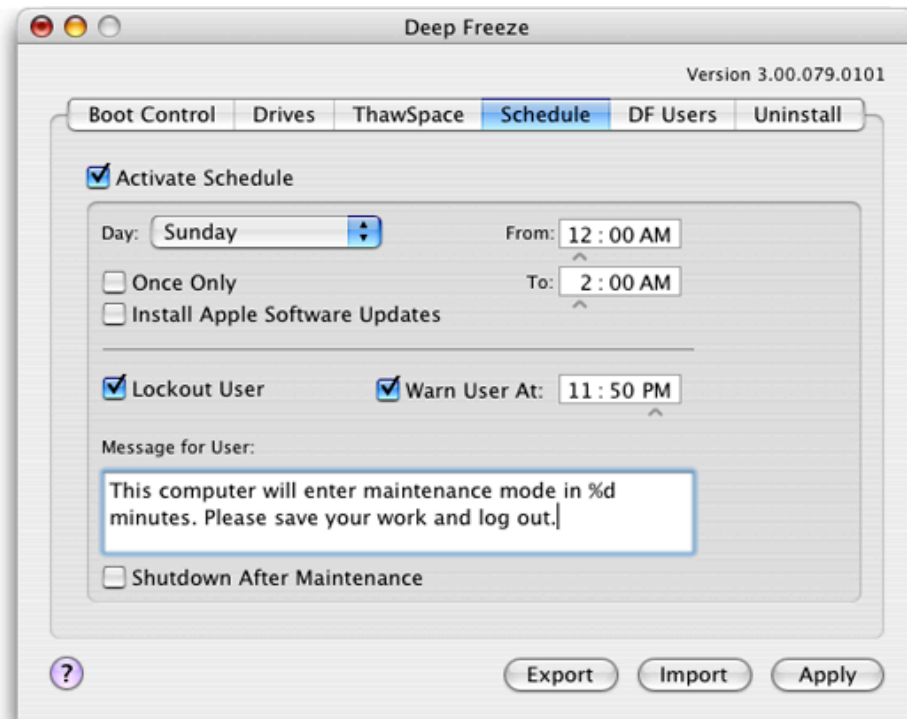
### ThawSpaces

- ThawSpaces appear as removable media on screen
- Ejected ThawSpaces will reappear upon log out or restart of the Mac





## Maintenance Scheduling

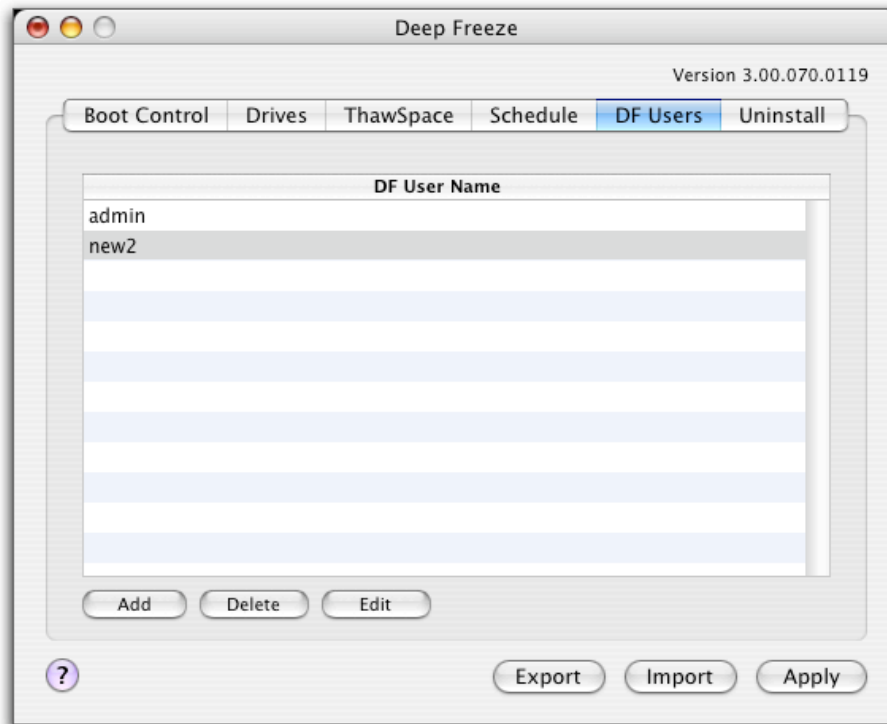


### Schedule Tab

- Deep Freeze Mac can specify the maintenance period to suit your needs
- Automatically perform Apple Software Updates
- Customizable user warnings
- Lock out user during maintenance period
- Energy-saving "Shutdown After Maintenance" feature



## Password Protection

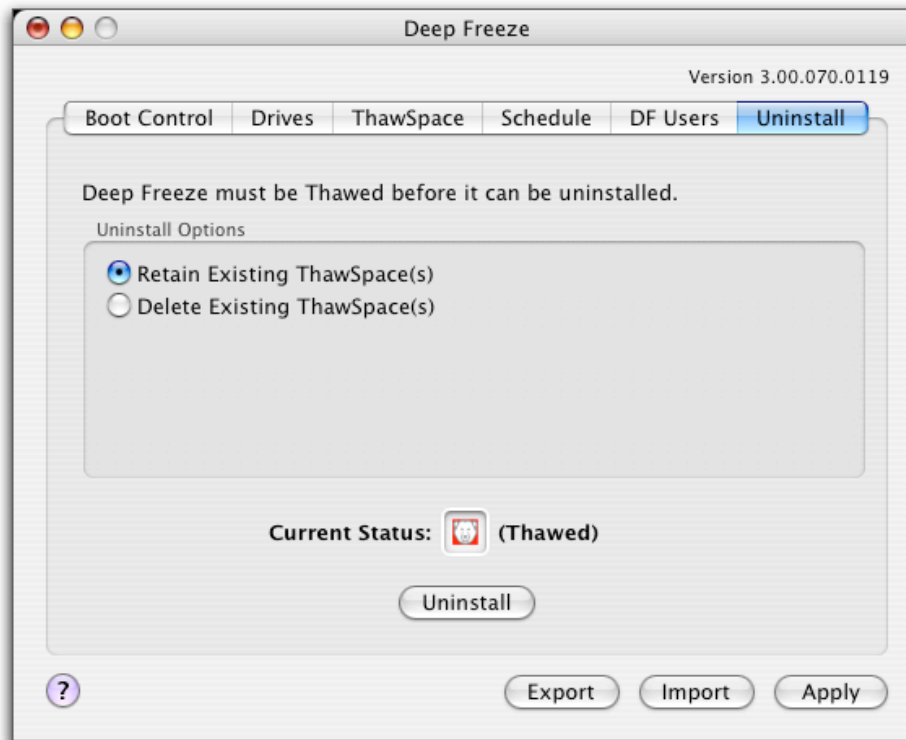


### DF Users Tab

- Designate up to four Deep Freeze users, each with their own password
- Add, edit or delete them either locally or through ARD tasks



## Uninstall Options

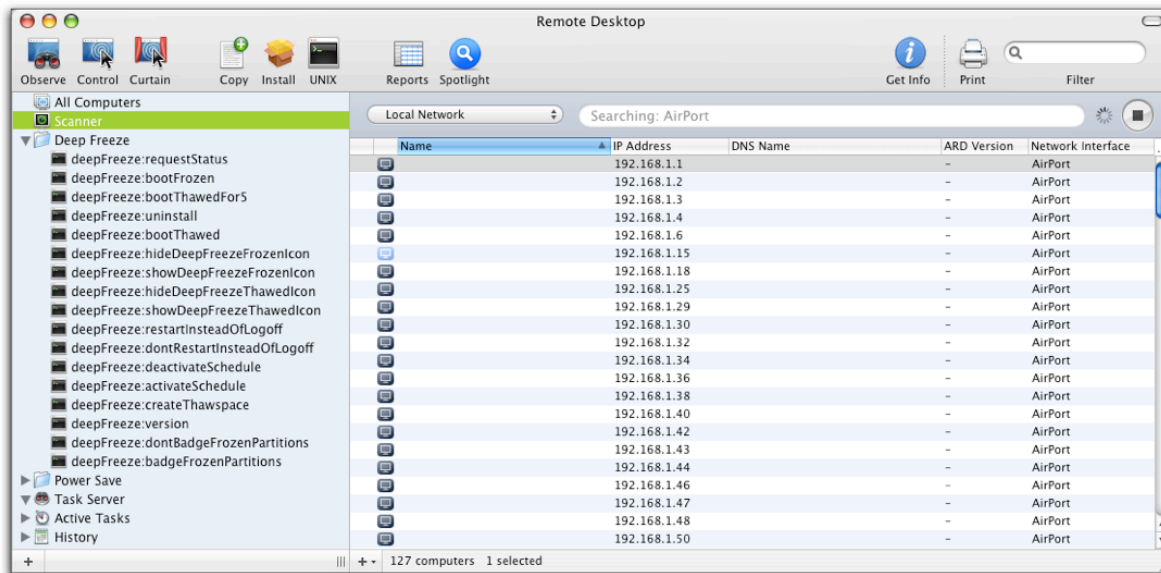


### Uninstall Tab

- Uninstall must be done when the machine is Thawed
- Option to retain or delete any existing ThawSpaces
- Retained ThawSpaces will reappear upon re-install of Deep Freeze Mac



## Client Administration via ARD Integration



## Network Management

- The Deep Freeze Assistant can create unique installation configurations and deploy them via ARD
- Use installed Deep Freeze-specific tasks to control Deep Freeze Mac functionalities remotely
- Tasks are usable in other desktop management solutions as well

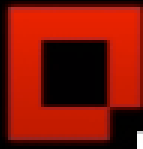


## Deep Freeze Mac Road Map

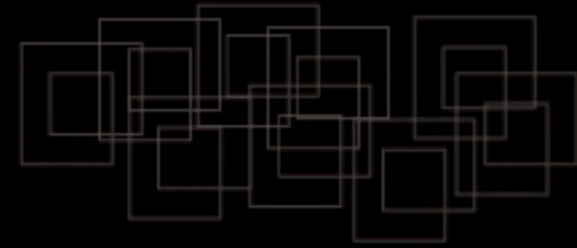


### Coming Soon:

- LANDesk plug-in
- Additional ARD commands
- Enhanced ThawSpace management
- Further scheduling options
- Preference pane integration
- Facilitated update/upgrade system
- Unified console for Mac and Windows



**FARONICS™**



## **Faronics Contact Information**

---

Phone: 1-800-943-6422 x4010

E-mail: [danderson@faronics.com](mailto:danderson@faronics.com)

---

Visit [www.faronics.com/mac](http://www.faronics.com/mac) to learn more

Download an Evaluation Today

<http://www.faronics.com/html/choose.asp?code=dardr>

---

**The Deep Freeze Challenge!**