



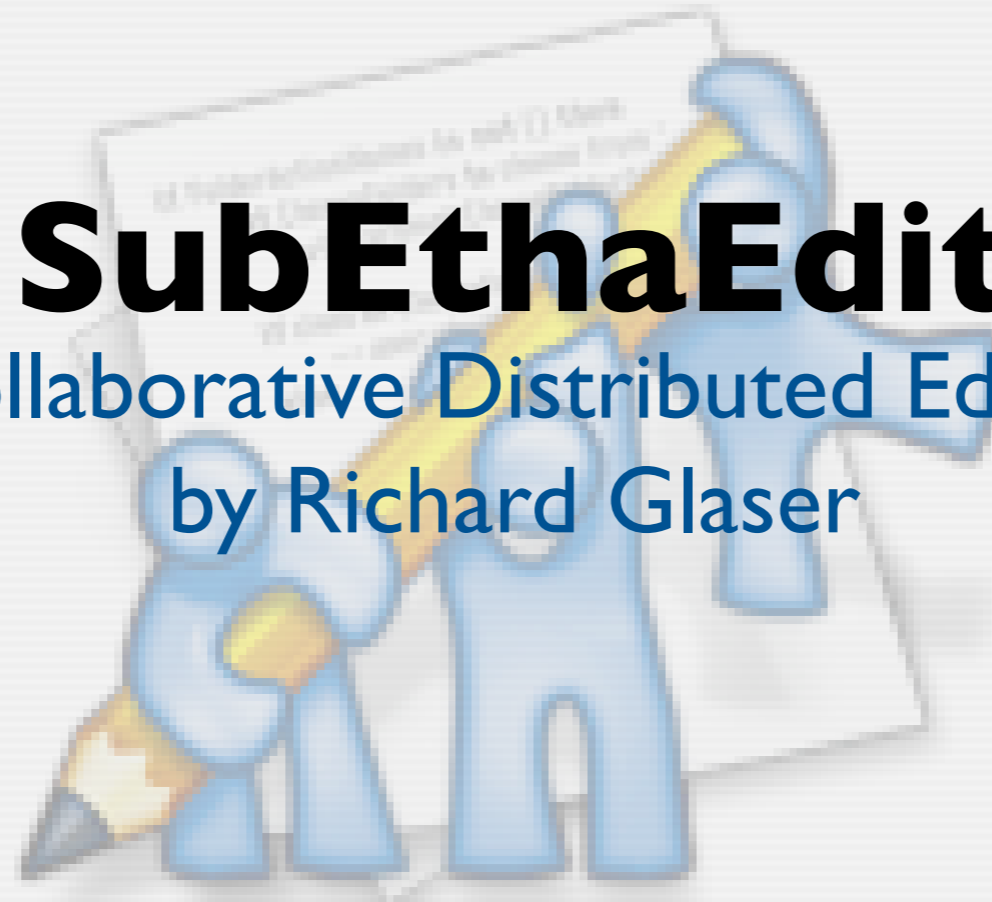
UNIVERSITY OF UTAH

STUDENT COMPUTING LABS

SubEthaEdit

Collaborative Distributed Editor

by Richard Glaser



What is it?

- A collaborative text editor
- Allows to share documents
 - On a local network (with Rendezvous)
 - Or on the internet
- Participants can type simultaneously and see what others are typing.



Information

- SubEthaEdit is Freeware NOT Open Source
- Developed by The Coding Monkeys
 - The Coding Monkeys is a small group of Computer Science students at Technical University of Munich.



**TheCoding
Monkeys**



Platforms

- Runs on Mac OS X only!!!
- Relies heavily on Coco framework
 - Rendezvous
 - Address Book
 - Some networking code
- No plans to port to other platforms



Typical Usage

- Meeting minutes:

No more arguing about who is minute taker.

- Collaborative Authoring:

Write text together with your co-authors

- Programming:

Improve your coding skills & productivity



UNIVERSITY OF UTAH
STUDENT COMPUTING LABS

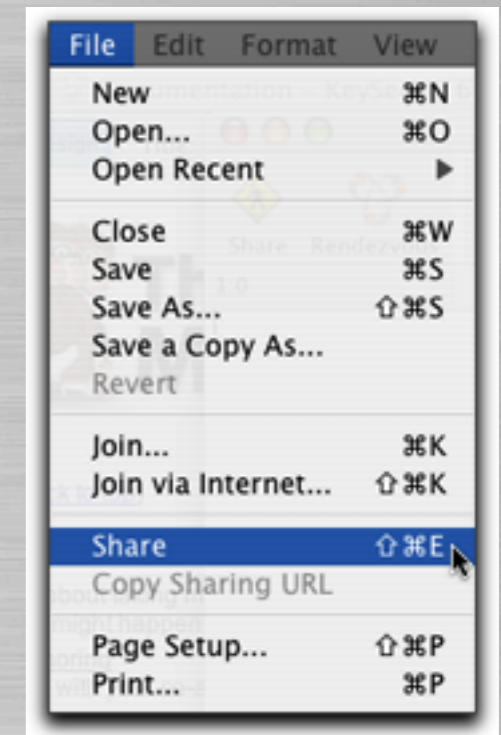
How to share a Doc?

How to share a document...



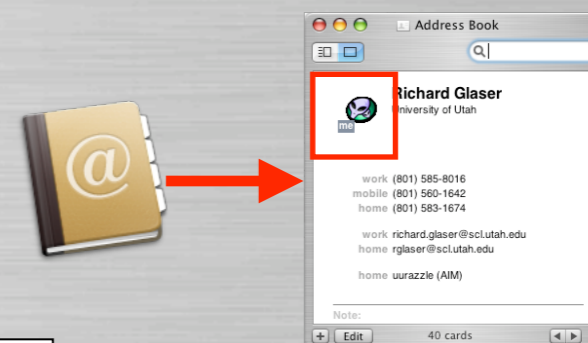
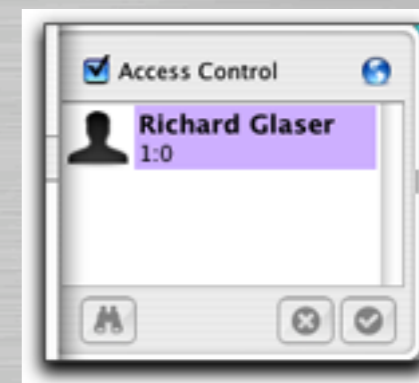
Open Doc & Share

- Open an existing document or create a new one.
- Choose "Share" from the File menu or click the "Share" button in the document's toolbar.



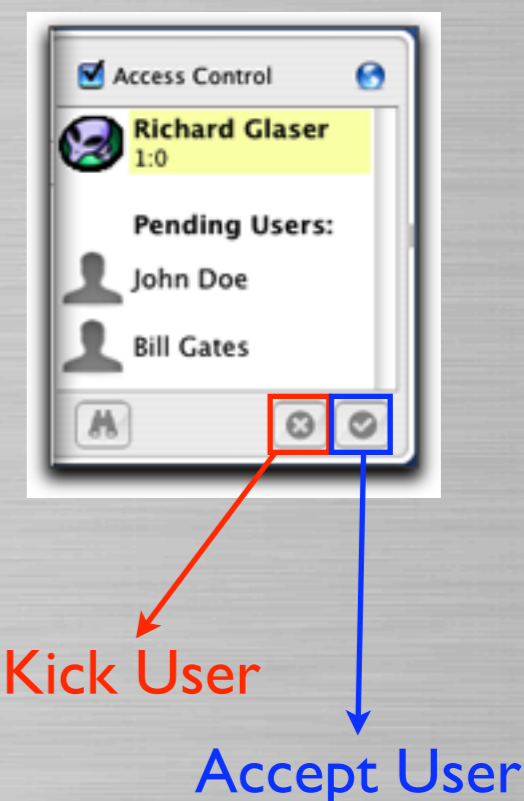
Pending Users

- The Participants drawer opens at the side of the document.
- If a user wants to join, their name & image (from the Address Book) appear in the Participants drawer under "Pending Users:".

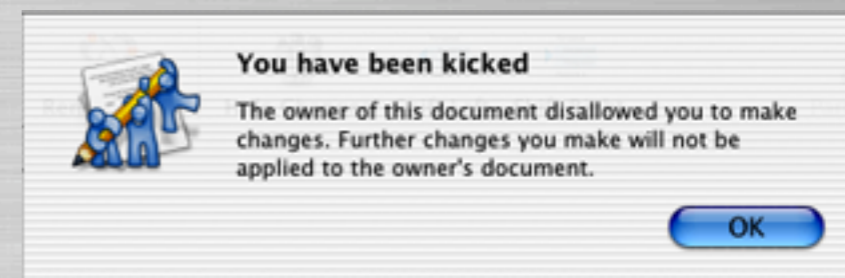


Accept or Deny Users

- Select the pending user in the participants drawer.
- Accept or deny their request with the buttons at the bottom.



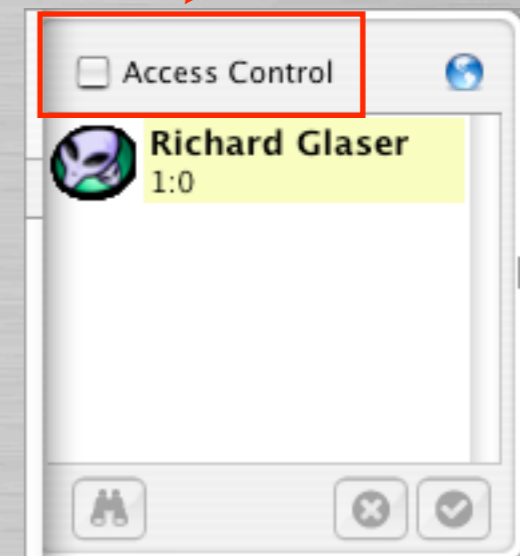
- The kicked user receives the following message



Allow w/o Permission

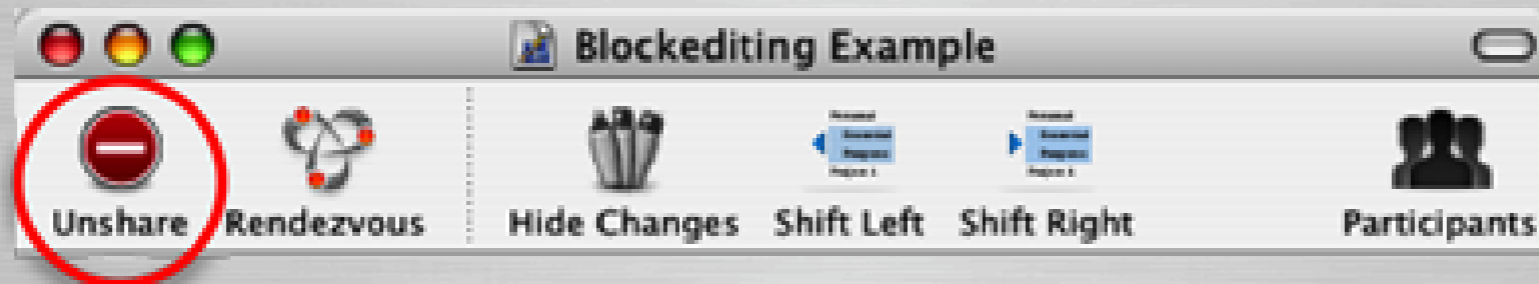
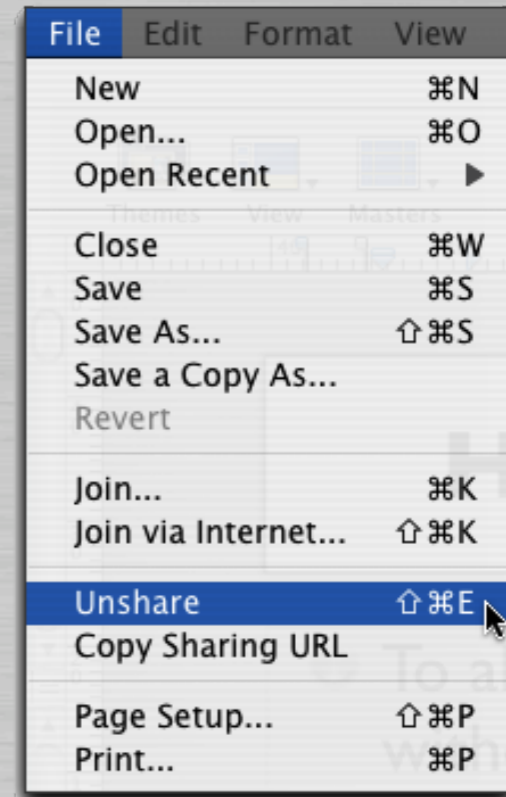
- To allow access to all users without individual permission
- Deselect Access Control in the participants windows
 - Note, currently it doesn't have Access Control granularity like:
 - Allowing all Rendezvous participants but require permission for internet participants, etc.

Deselect
Access Control



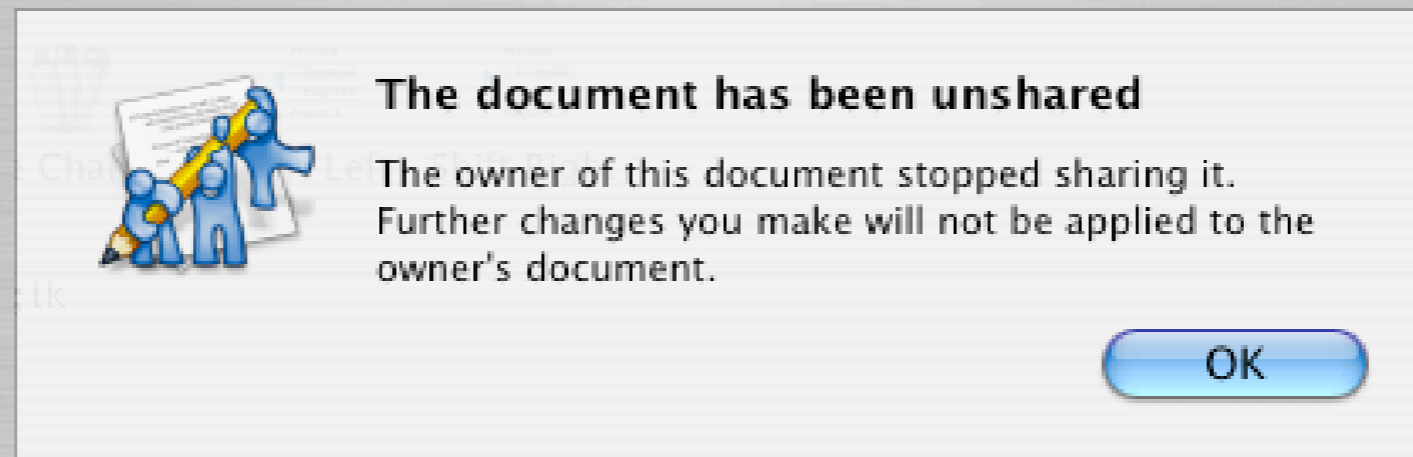
Unshare Doc

- To unshare a document:
 - Choose "Unshare" from the File menu.
 - Or click the "Unshare" button in the document's toolbar.



Unshared Message

- If you are a participant of a shared document.
 - You will receive the following message.



- Note - The doc window will still be open & you can still save the file.



UNIVERSITY OF UTAH

STUDENT COMPUTING LABS

Demonstration

Sharing a document...





UNIVERSITY OF UTAH

STUDENT COMPUTING LABS

How to connect?

Connecting to shared document...

Rendezvous or Internet

- You can join a shared document via Rendezvous or the Internet
 - Rendezvous is limited to your subnet.
 - Firewall - port 30729 need to open

Specify a port on which you would like to receive networking traffic. Other ports can be specified by selecting 'Other' in the Port Name popup. Then enter a the port name and a number (or a range or series of port numbers) along with a description.

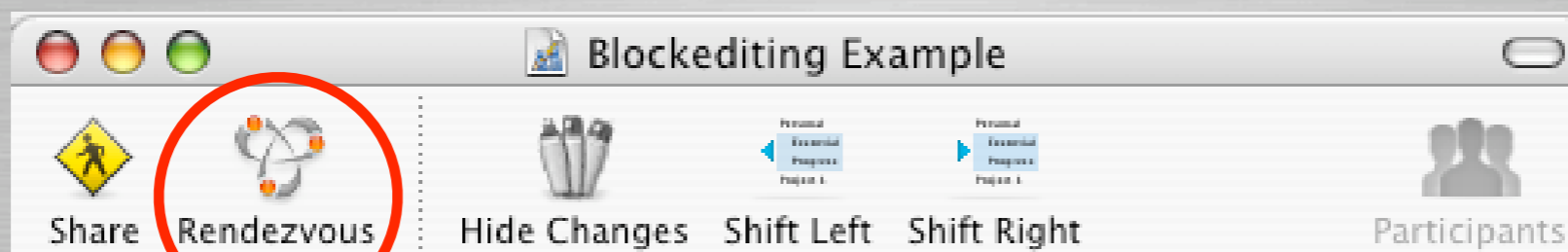
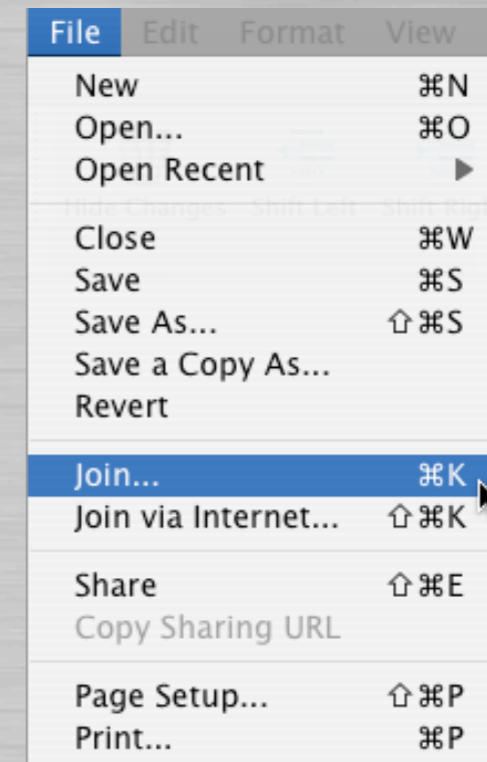
Port Name:

Port Number, Range or Series:

Description:

Connect via Rendezvous

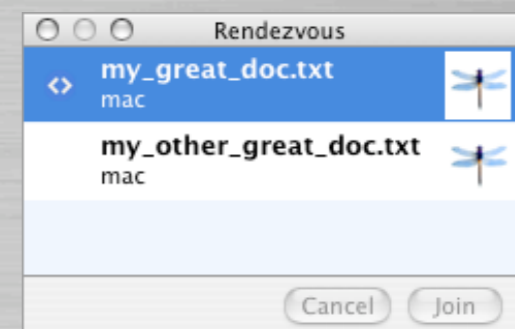
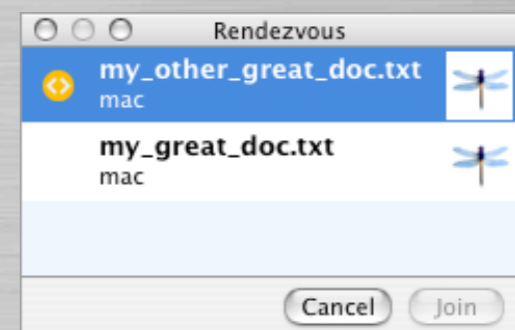
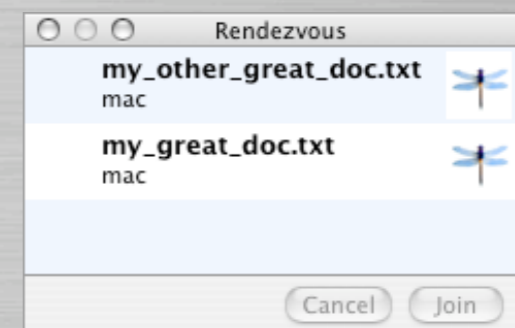
- To connect via Rendezvous:
 - Select “Join...” command from the “File Menu”
 - Click on Rendezvous button



Rendezvous
Button

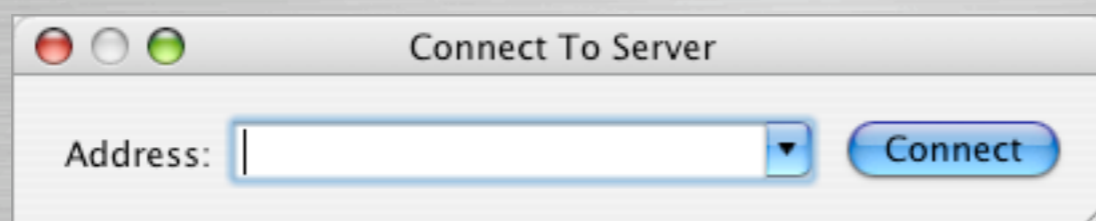
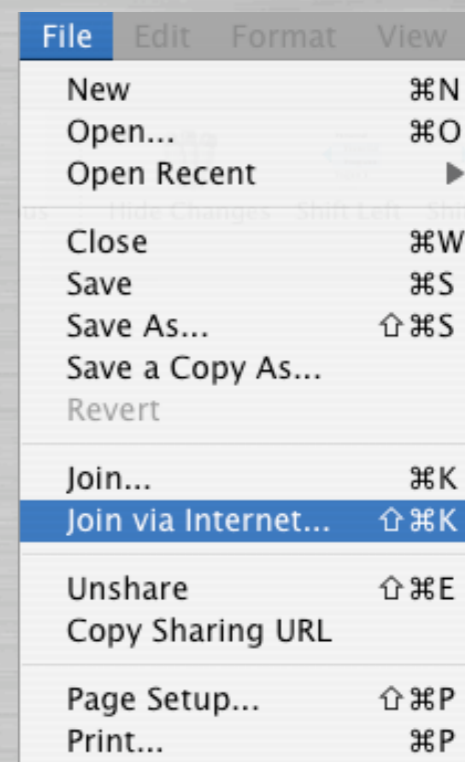
Accessing Shared Docs

- Once you select Rendezvous
 - You will see window display with shared documents.
 - Select the a shared document click “Join” button
 - If the host has Access Control enabled, you will see a “Status Requesting” icon.
 - If access granted, icon changes.



Connect via Internet

- To connect via Internet:
 - Select “Join...” command from the “File Menu”
 - Enter the IP or hostname in “Connect to Server” dialog.



Shared Doc Browser Icons

● The following icons are used:



● Status Shared - Your shared document



● Status Requesting - Requesting access for doc



● Status Connecting - Access accepted for doc



● Status Connected - A new window opens



● Status Denied - Access denied for document.





UNIVERSITY OF UTAH

STUDENT COMPUTING LABS

Demonstration

Connecting to shared document...

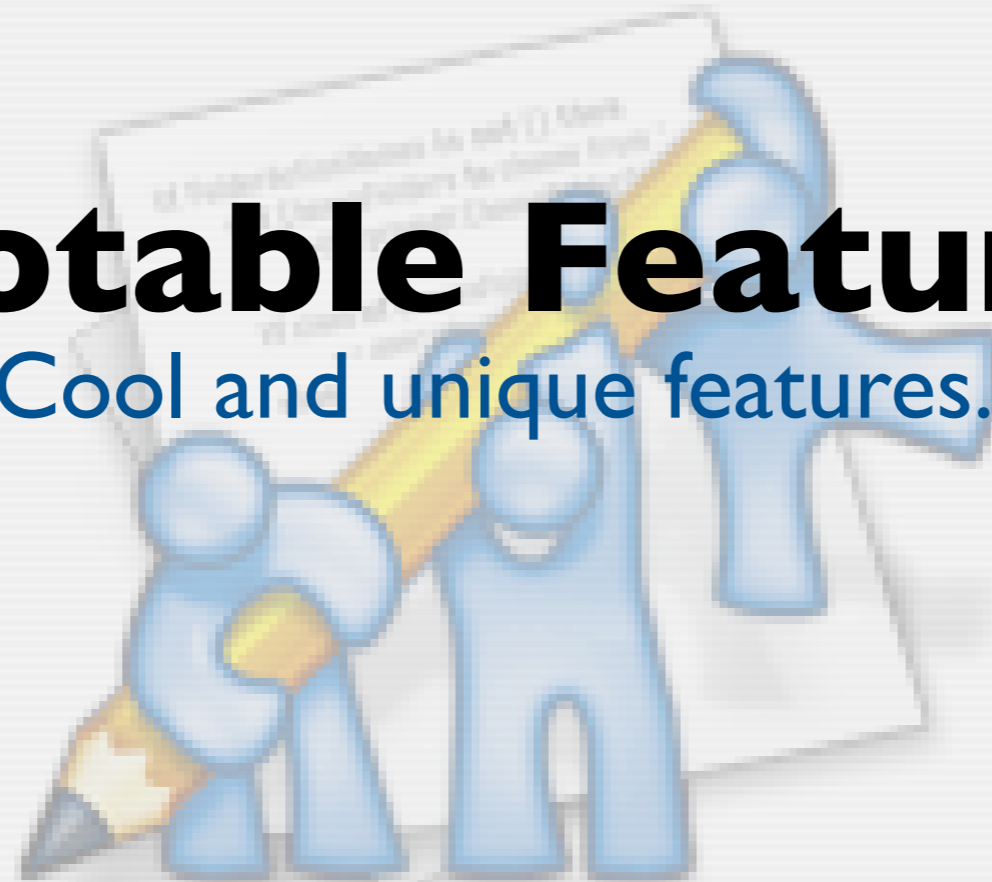


UNIVERSITY OF UTAH

STUDENT COMPUTING LABS

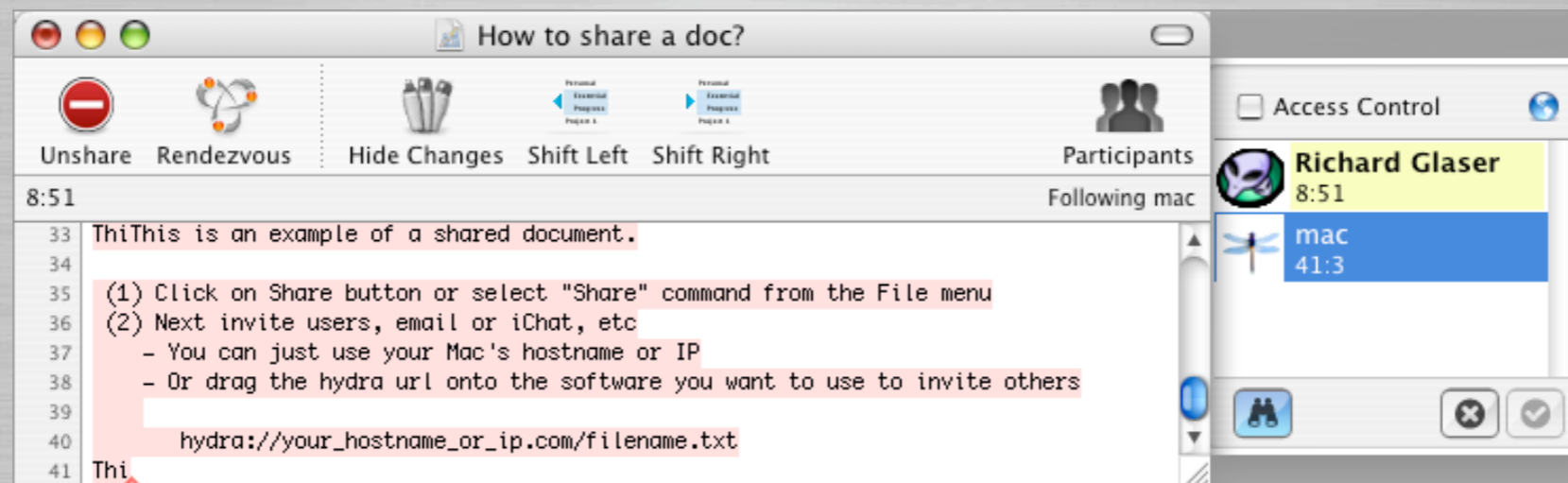
Notable Features

Cool and unique features...



Follow Participant

- When connect to a shared document
 - Double-click on the user in the Participant drawer.
 - Or select the user and click on the binoculars.



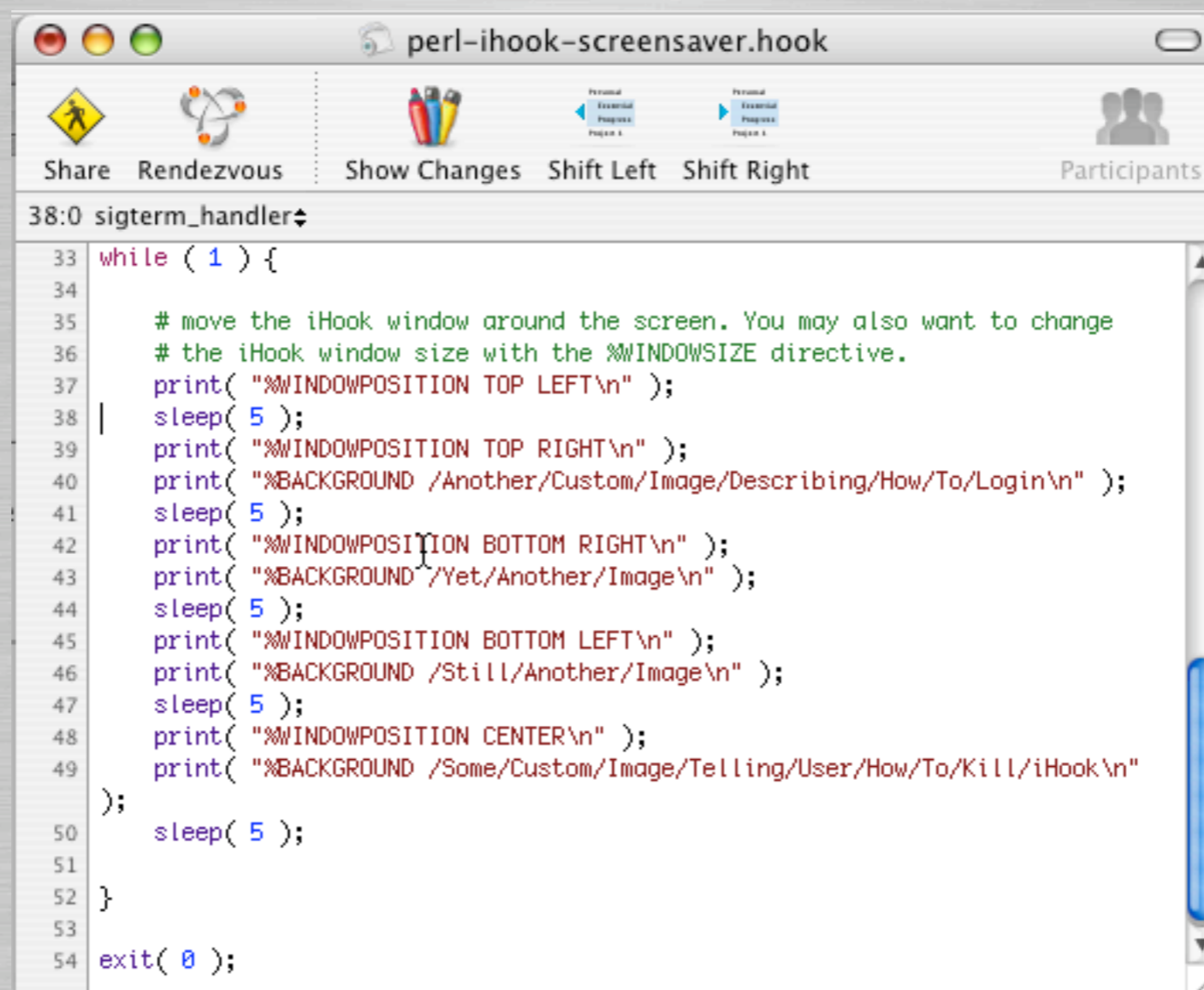
- This useful in large rapidly changing documents

Blockediting

- Edit multiple lines at once.
 - Ideal for commenting, formatting and repetitive code structures.
 - Hold down the option (alt) key while dragging a selection with the mouse. You can select multiple noncontiguous lines.
 - Position the cursor within the selection and edit all lines at once. To stop blockedit press escape or click outside the selection.



Blocked editing



```
33 while ( 1 ) {
34
35     # move the iHook window around the screen. You may also want to change
36     # the iHook window size with the %WINDOWSIZE directive.
37     print( "%WINDOWPOSITION TOP LEFT\n" );
38     sleep( 5 );
39     print( "%WINDOWPOSITION TOP RIGHT\n" );
40     print( "%BACKGROUND /Another/Custom/Image/Describing/How/To/Login\n" );
41     sleep( 5 );
42     print( "%WINDOWPOSITION BOTTOM RIGHT\n" );
43     print( "%BACKGROUND /Yet/Another/Image\n" );
44     sleep( 5 );
45     print( "%WINDOWPOSITION BOTTOM LEFT\n" );
46     print( "%BACKGROUND /Still/Another/Image\n" );
47     sleep( 5 );
48     print( "%WINDOWPOSITION CENTER\n" );
49     print( "%BACKGROUND /Some/Custom/Image/Telling/User/How/To/Kill/iHook\n"
50 );
51     sleep( 5 );
52 }
53
54 exit( 0 );
```



SubEthaEdit URLs

● SubEthaEdit URLs:

SubEthaEdit now supports URLs and links. Click in your browser to join documents. Invite users to your document by sending them an url.

- Supports a "hydra://" URI scheme.
- To invite someone to your already shared document, drag the small globe in the upper right corner of the participants drawer to your email or chat client and send a message.

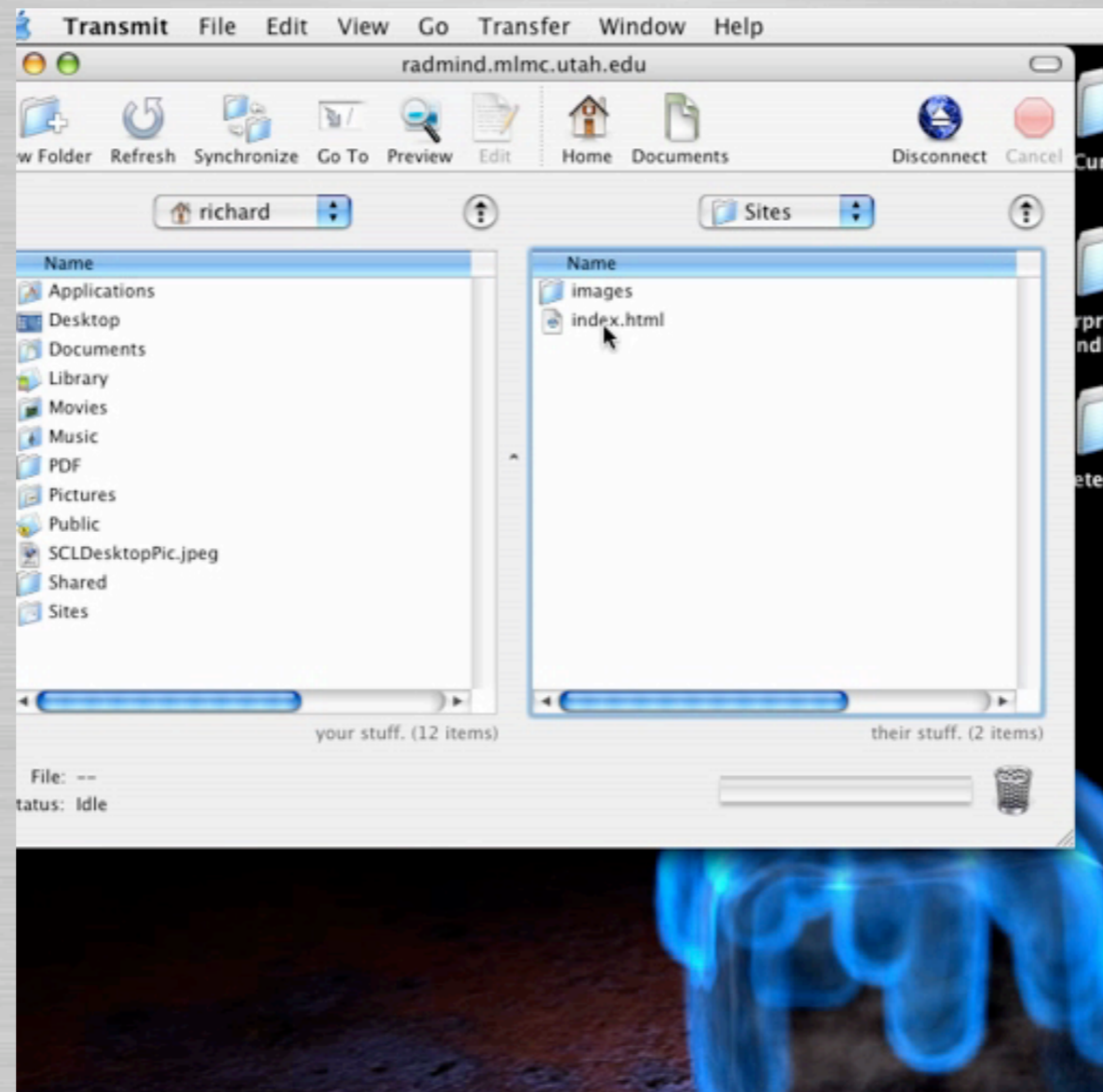
FTP Client Integration

● FTP Client Integration

SubEthaEdit implements an interface for FTP clients called "ODB editor suite".

- This allows to edit files out of you favorite ftp client with SubEthaEdit, enabling e.g. upload on save.
- Edit the document in SubEthaEdit like working locally. A "save" in SubEthaEdit will trigger your FTP client to upload the file.
- Works with Fetch, NetFinder, Fugu and Transmit

SubEthaEdit URLs & FTP



UNIVERSITY OF UTAH
STUDENT COMPUTING LABS



UNIVERSITY OF UTAH

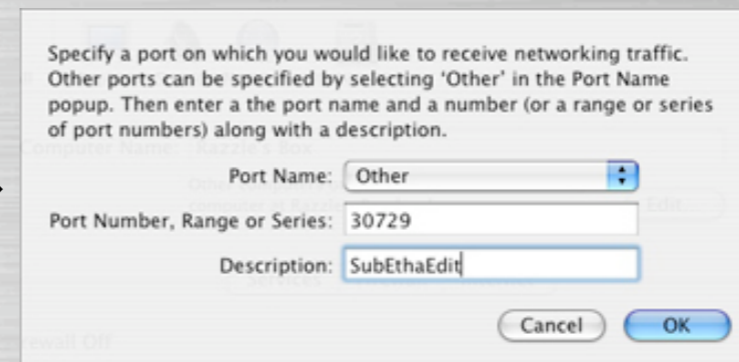
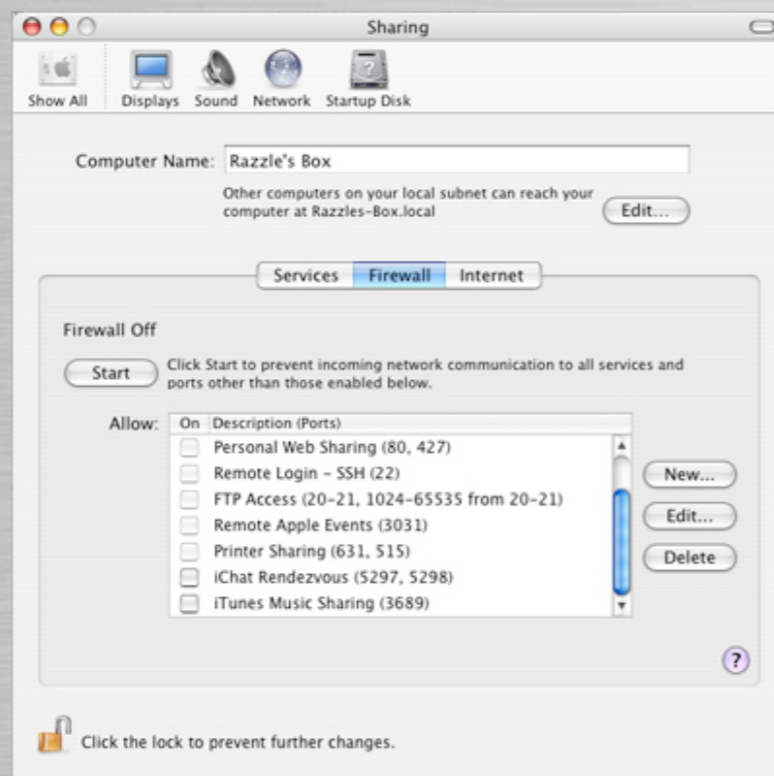
STUDENT COMPUTING LABS

Tips & Tricks

Secrets of the SubEthaEdit

Firewall

- To share/join shared documents
 - Port 30729 must be open
 - Create New Firewall Configuration





UNIVERSITY OF UTAH

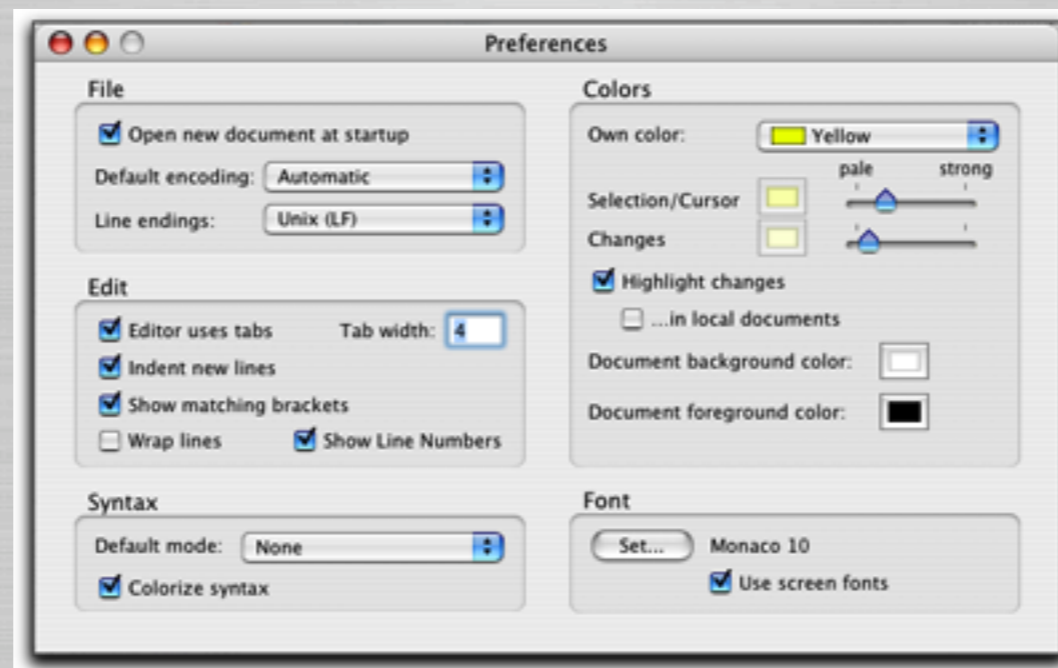
STUDENT COMPUTING LABS

Issues & Features

Feature requests and problems...

Dynamically Applied Prefs

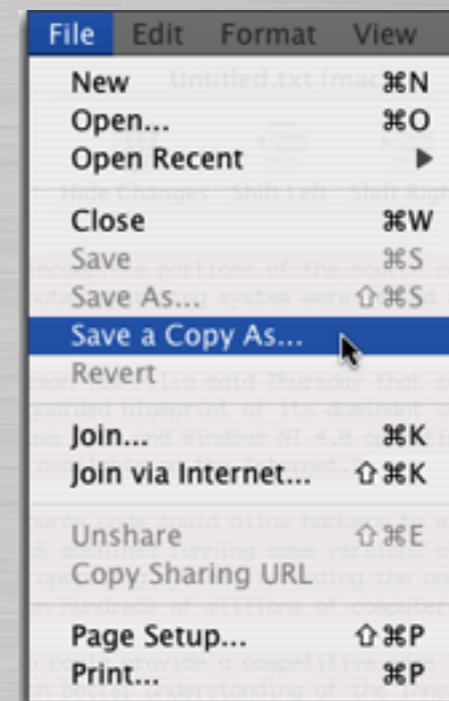
- Dynamically Applied Preferences
 - Doesn't support applying new preferences to open documents like BBEdit
 - Options like text wrap, line numbers



Saving Shared Doc's

● Saving Shared Documents

- More difficult than it needs to be...
- Must manually select “Save a Copy As..” command from File menu.
- Replace or rename file after each save.



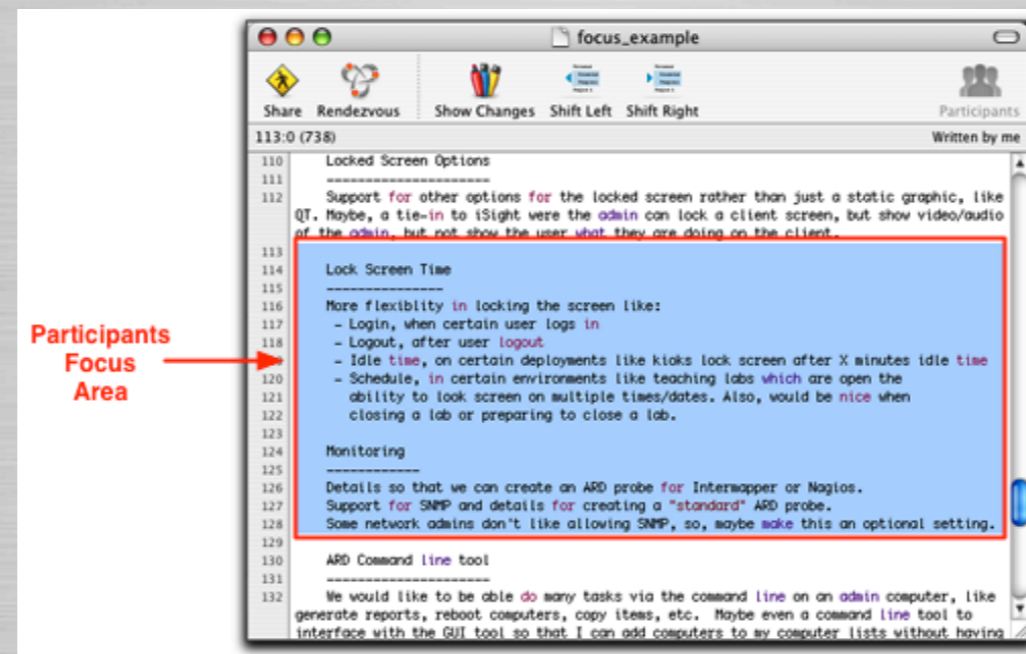
Versioning & Focus

Versioning

- Allow viewing and reverting to previous edits.

Focus

- Allow host restrict participants to part of doc



Granular ACLs & Blocking

● Granular Access Controls

- More granular access controls
 - Allowing rendezvous connect w/o permission
 - Require permission for only Internet participants
 - Support observe mode

● Blocking

- Support for participant blocking
- Similar to iChat functionality



UNIVERSITY OF UTAH

STUDENT COMPUTING LABS

Questions & Answers

Any questions or answers?