

# Status of AppleTalk on Campus

By

Matt McBride

University of Utah

Office of Information Technology



The University of Utah

Student Computing Labs



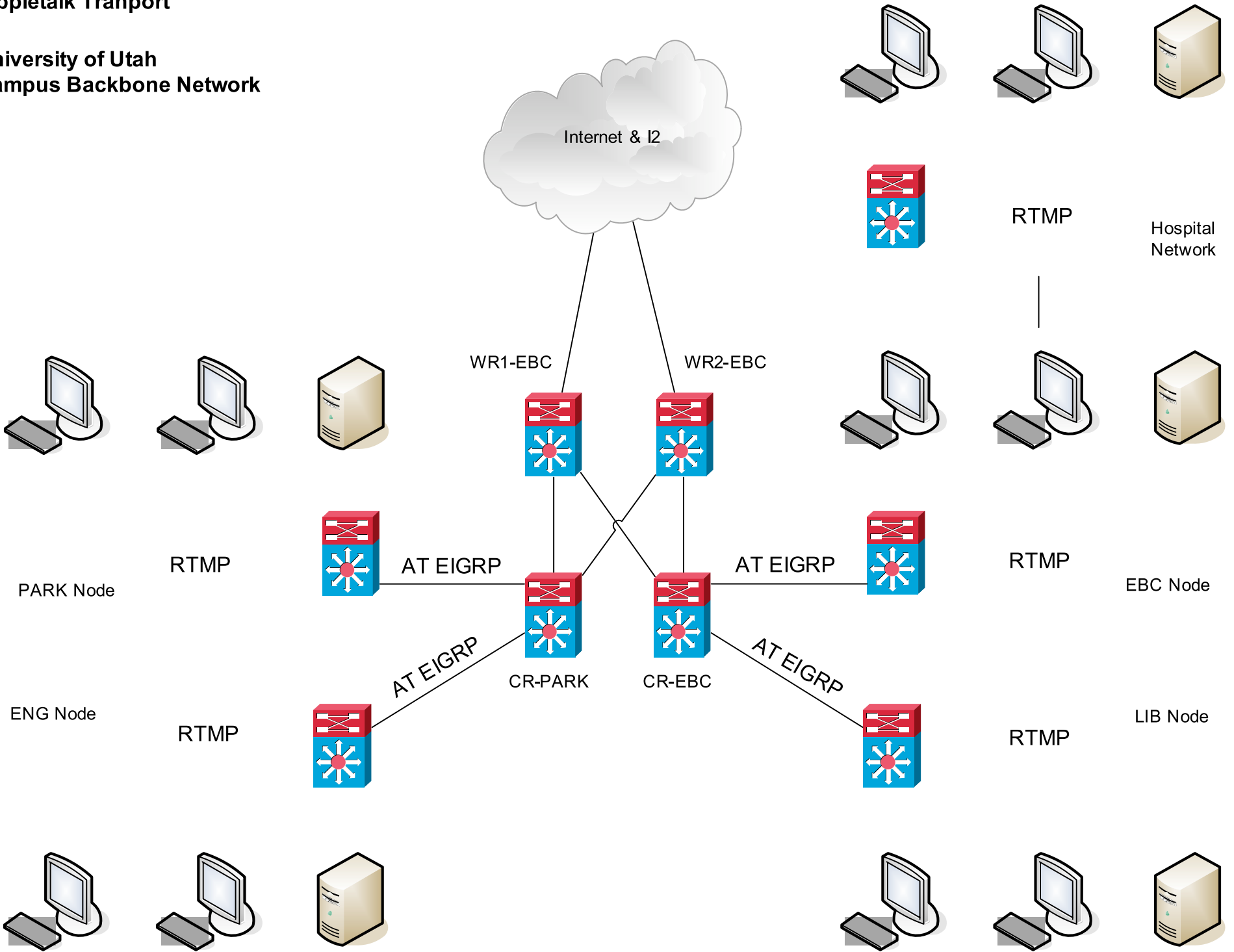
# What is the Status of AT?

- Bug discovered in current code that corrupts vlan database
- Upgrade to newest code does not support AppleTalk routing in EIGRP
- Current code is 12.2(17)SXB6
- Latest code is 12.2(18)SXD4
- We also need functionality in latest code such as support for multicast in IPv6
- Industry is moving away from protocols such as AppleTalk and IPX



# Appletalk Transport

## University of Utah Campus Backbone Network





# Sample AT Routing Table

```
r1-lib#sh appletalk route
```

```
Codes: R - RTMP derived, E - EIGRP derived, C - connected, A - AURP
```

```
       S - static P - proxy
```

```
146 routes in internet
```

The first zone listed for each entry is its default (primary) zone.

```
E Net 4146-4146 [2/G] via 33887.151, 998463 sec, Vlan920, zone sci
```

```
R Net 4323-4323 [1/G] via 10520.133, 5 sec, Vlan505,
```

```
       Zone: "Heritage Commons Labs"
```

```
E Net 5473-5473 [2/G] via 33887.151, 998463 sec, Vlan920, zone Athletics
```

```
R Net 7448-7448 [1/G] via 10520.133, 5 sec, Vlan505, zone MLMC
```

```
R Net 7449-7449 [1/G] via 10520.133, 5 sec, Vlan505, zone MLMC
```

```
R Net 8219-8219 [3/G] via 8269.235, 7 sec, Vlan189, zone humanities
```

```
R Net 8268-8268 [1/G] via 8269.235, 7 sec, Vlan189, zone humanities
```

```
C Net 8269-8269 directly connected, Vlan189, zone Lang&Comm
```

```
R Net 8271-8271 [1/G] via 8269.235, 7 sec, Vlan189, zone humanities
```

```
E Net 8472-8472 [2/G] via 33888.237, 689823 sec, Vlan921, zone Honors
```

```
R Net 8473-8473 [2/G] via 8269.235, 7 sec, Vlan189, zone humanities labs
```

```
R Net 8729-8729 [3/G] via 8269.235, 7 sec, Vlan189, zone communication
```

```
E Net 8781 [3/G] via 33887.151, 998463 sec, Vlan920, zone Bioengineering
```

```
E Net 8803-8803 [2/G] via 33887.151, 998463 sec, Vlan920, zone BIOPOLYMERS
```

```
C Net 8984-8984 directly connected, Vlan506, zone Dance
```



# Options for AT?

- Can still route DDP packets using RTMP within networks connected to the same node
- Migrate to IP for network connectivity across the CBN
- Remove it completely from the router if not needed any longer
- Support for AT is gradually dwindling
- Other Options?

