

PaperCut NG

Chris Dance

November 2006



PaperCut[™]
Print and Internet Control



Overview

- Overview of PaperCut NG
- Why we offer a Mac Version
- The story of our Mac “adventures”

About Me:

- Main Mac Developer
- I’m based in Melbourne, Australia
(yes – it’s early in the morning!)



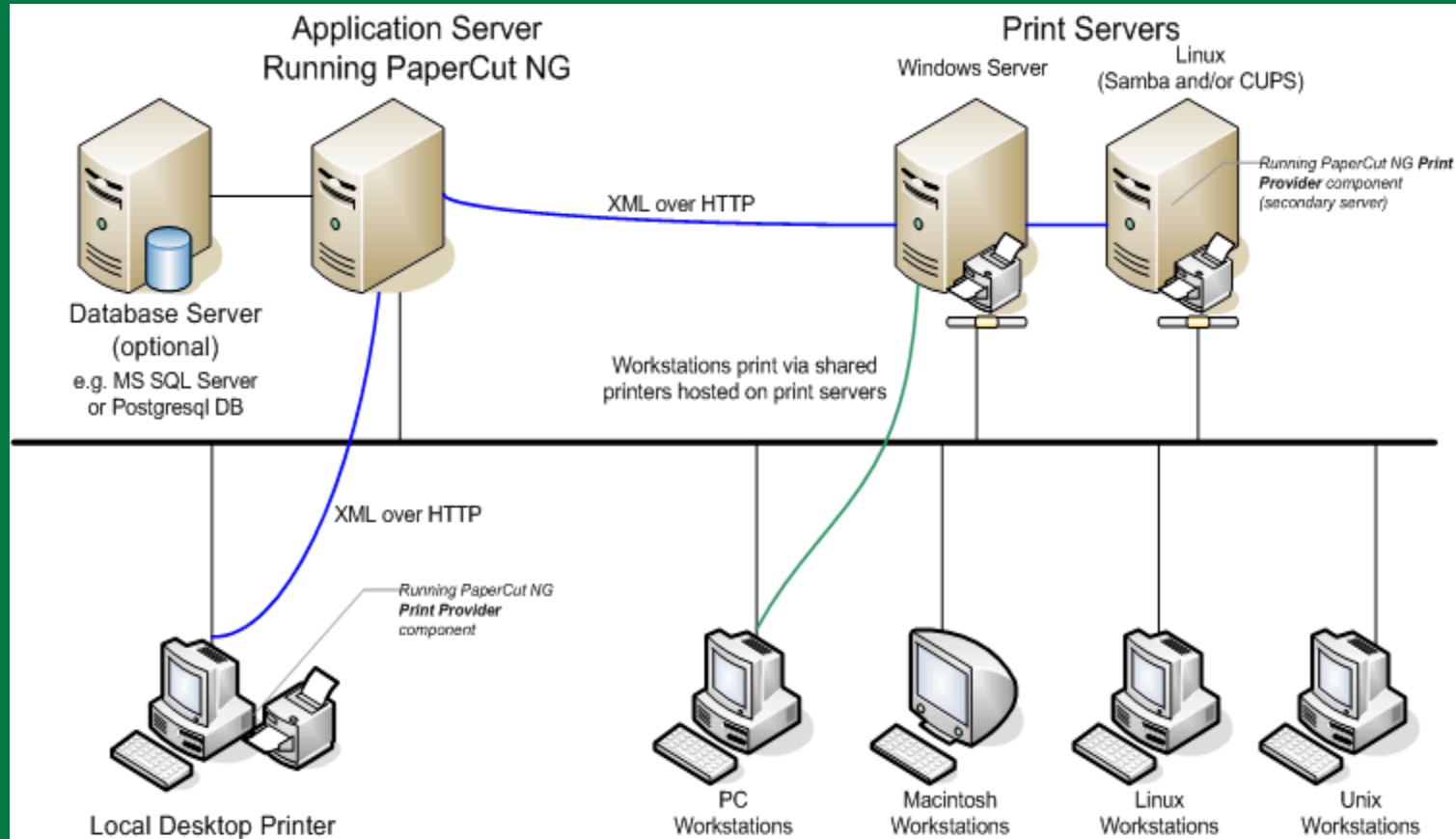
PaperCut™

PaperCut NG

- What is PaperCut NG?
 - A multi-platform print control solution
 - Supports Mac, Windows, Linux and Unix
 - First version released in 1998 with a cross-platform rewrite in 2005
 - A complete modern solution supporting networks of all sizes
 - In use in thousands of education based organizations across 60 countries



Architecture

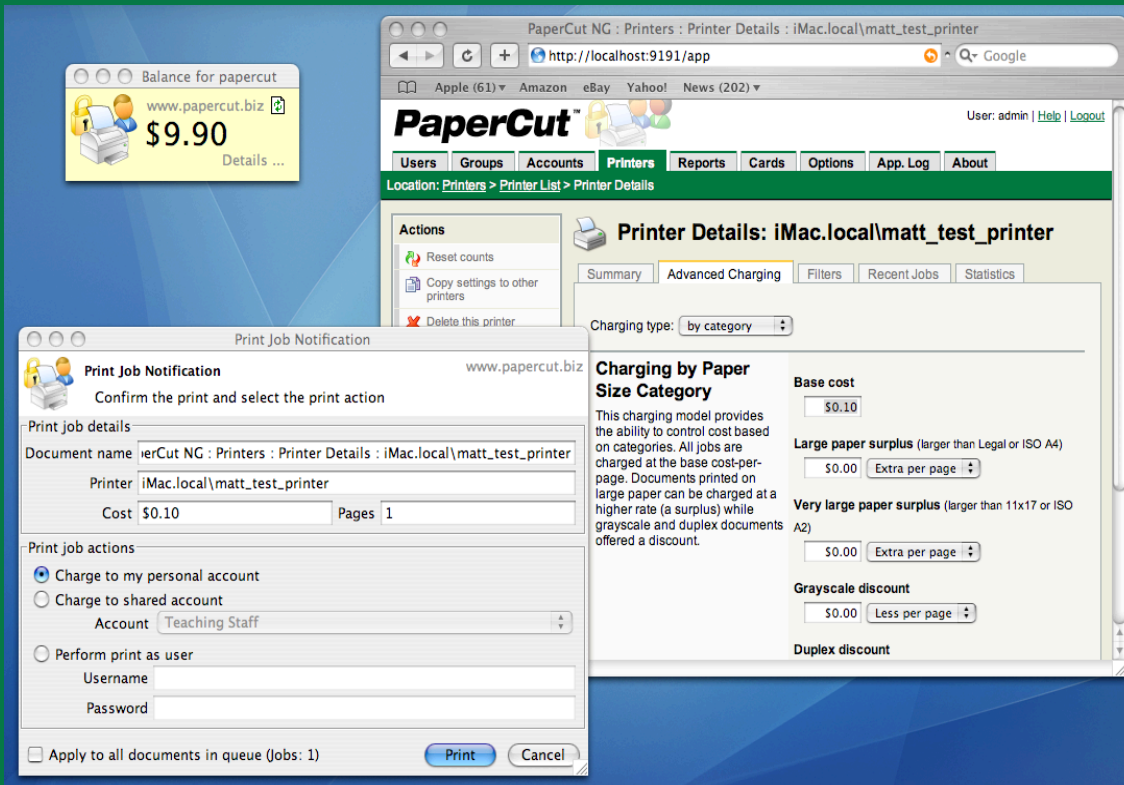


Apple Mac Support

- Mac support at all application levels
- Mac version has all the same features as the Windows and Linux versions
- All platforms are equal – the Mac version is not a 2nd class citizen 12-months behind!
- Integrates with CUPS on the server level
- A Universal Application
- Open Directory and Local NetInfo integration



Key Features



The screenshot displays the PaperCut NG web interface in a browser window. The main content area shows 'Printer Details: iMac.local\matt_test_printer' with tabs for Summary, Advanced Charging, Filters, Recent Jobs, and Statistics. The 'Advanced Charging' tab is active, showing a 'Charging type' of 'by category' and a 'Charging by Paper Size Category' section. This section includes a 'Base cost' of \$0.10, a 'Large paper surplus' of \$0.00 (with an 'Extra per page' dropdown), a 'Very large paper surplus' of \$0.00 (with an 'Extra per page' dropdown), a 'Grayscale discount' of \$0.00 (with a 'Less per page' dropdown), and a 'Duplex discount' field. A 'Print Job Notification' dialog box is overlaid on the left, prompting the user to 'Confirm the print and select the print action'. The dialog shows 'Print job details' including 'Document name', 'Printer', 'Cost \$0.10', and 'Pages 1'. Under 'Print job actions', the user can choose to 'Charge to my personal account', 'Charge to shared account' (with 'Account' set to 'Teaching Staff'), or 'Perform print as user' (with 'Username' and 'Password' fields). There are 'Print' and 'Cancel' buttons at the bottom of the dialog.

- Advanced cost models
- Browser based admin
- Optional client software
- Shared accounts
- Release station
- Pre-Paid Voucher system
- Web Services and API (external systems, credit card payment gateways, integration with 3rd party systems, etc.)



PaperCut™

Key Features Cont.

- For networks of all sizes
 - supports clustering
 - external databases (e.g. Postgresql)

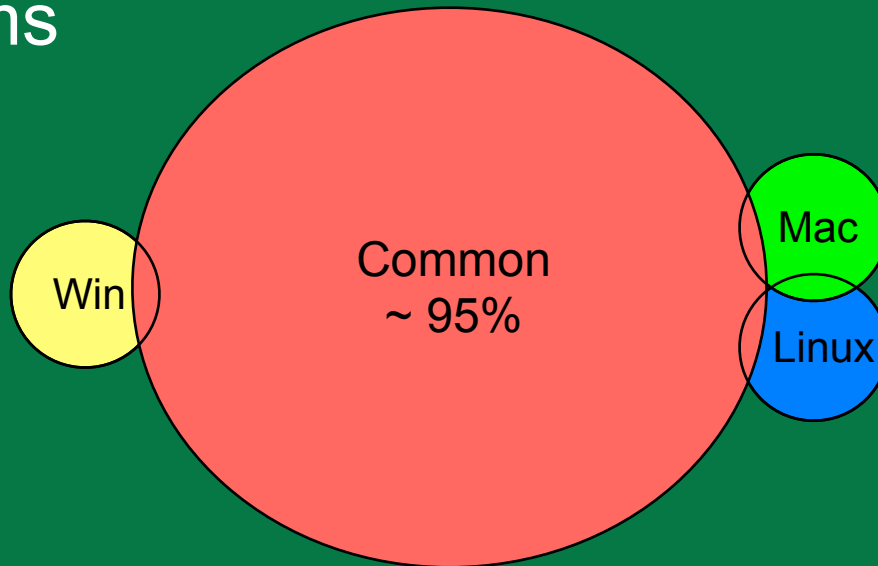
- Source Code Access
 - Customer have access to core source code
 - Source code already used to submit Mac client improvements.



PaperCut™

Our Mac Adventures

- Not a “port” but a true cross platform project
- 95% source code is shared between all platforms



- Tools: GCC, Java, Eclipse, Perl, Shell Script



PaperCut™

Positive Experiences

- Fantastic community support during the testing phase
- Realistic changes proposed by most testers
- UNIX underpinning provides the “power” complex server-side applications require



PaperCut™

Negative Experiences

- An installer bug accidentally deleted one tester's entire / Applications directory! Oops!
- Understanding culture – is the command-line “acceptable”?
- GUI administration limits CUPS configuration
- Lack of authentication in print queues
- Hard to access some Mac API's from Java
- More developer documentation needed!

Future Development

- Simple installer for Mac Laptops
- Desktop Widget
- Authentication via login hook
- Client messages via Growl
- Option to prevent client from being accidentally quit
- Testing on Leopard





- Website: <http://www.papercut.biz/>
- Developer Blog: <http://www.papercut.biz/blog>