



Super Duper

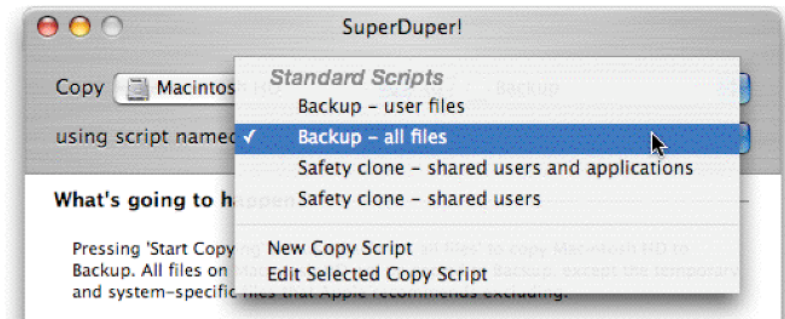
Features

- Bootable copies
- ASR compliant images
- Safety Clone
- Customizable





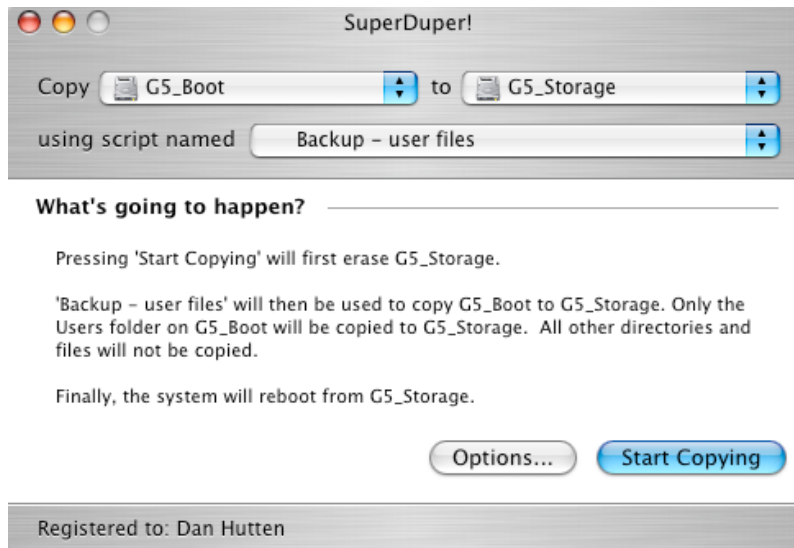
Backup - All files



- Creates a complete bootable backup of the selected volume.
- Good for “quick & dirty migrations” and for complete backups.



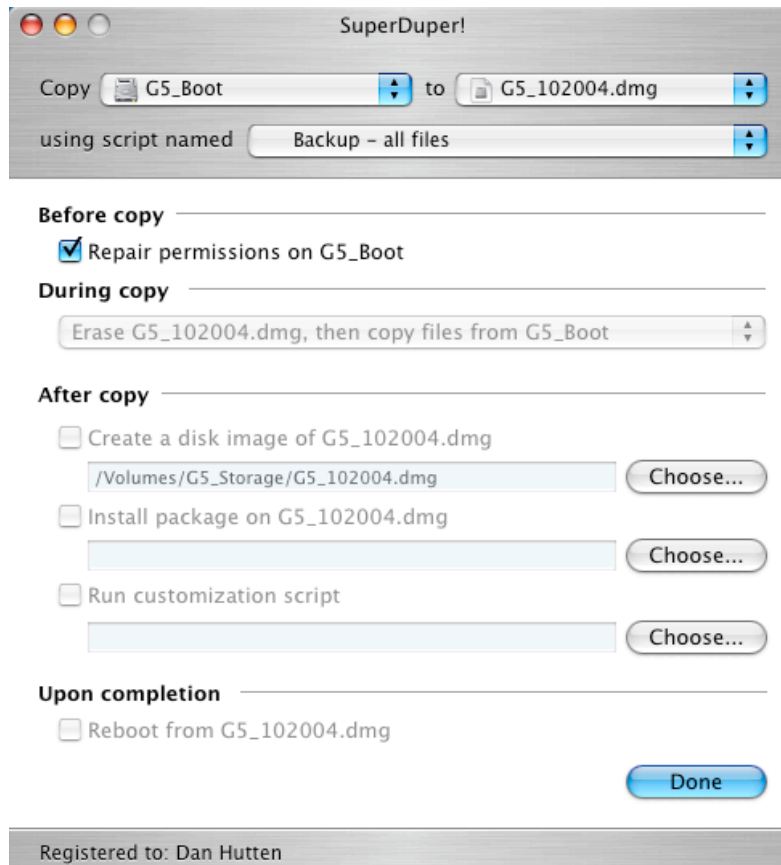
Backup - User files



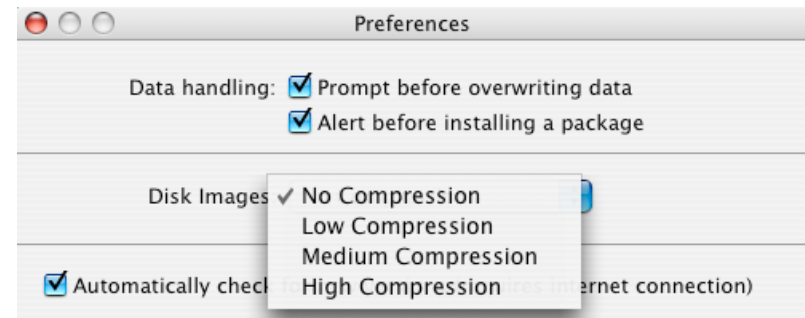
- Have not used much.
- “Backs up specific files in the Home directories of the various accounts on your system”.



Create Disk Image



- Reliable, easy to use.
- Takes a long time.
- Compression setting not intuitive found in preferences.



Can use any script to make image.



Safety clone

shared users and applications

(think copy everything EXCEPT users and applications)
(users and applications are shared with symlink)

SuperDuper!

Copy to

using script named

What's going to happen?

Pressing 'Start Copying' will first erase G5_Storage.

'Safety clone - shared users and applications' will then be used to copy G5_Boot to G5_Storage. All files will be copied, except for user files and installed 3rd party (non-Apple) applications, which will be shared between G5_Boot and G5_Storage.

User files include all Home folders as well as user-specific data stored elsewhere (such as your iSync data). Any changes made to these files on either drive will automatically be reflected on the other, ensuring you can recover from any trouble quickly and easily, without losing your work, simply by restarting with your startup disk set to G5_Boot.

Sharing applications saves space on G5_Storage, while still allowing them to be run.

Registered to: Dan Hutten

- Shirt Pocket says this is the better choice.
- Apple apps (iDVD, iSync, etc) are copied to destination so updates are isolated on test volume.



Safety clone shared users

(think copy everything EXCEPT users)
(users are shared with a symlink)

SuperDuper!

Copy G5_Boot to G5_Storage

using script named Safety clone - shared users

What's going to happen?

Pressing 'Start Copying' will first erase G5_Storage.

'Safety clone - shared users' will then be used to copy G5_Boot to G5_Storage. All files will be copied, except for user files, which will be shared between G5_Boot and G5_Storage.

User files include all Home folders as well as user-specific data stored elsewhere (such as your iSync data). Any changes made to these files on either drive will automatically be reflected on the other, ensuring you can recover from any trouble quickly and easily, without losing your work, simply by restarting with your startup disk set to G5_Boot.

[Options...](#) [Start Copying](#)

Registered to: Dan Hutten

- Makes more sense if your purpose is to test 3rd party apps
- Takes more space as all applications are copied



Options

SuperDuper!

Copy to

using script named

Before copy

Repair permissions on G5_Boot

During copy

After copy

Create a disk image of G5_Storage

Install package on G5_Storage

Run customization script

Upon completion

Reboot from G5_Storage

Registered to: Dan Hutten



Summary

Easier to use than ASR command line.

More versatile than Disk Utility.

Some application authorizations are broken.

User prefs. could still cause problems?

Use caution when moving to different hardware.

Combined updater solved no-boot condition.

Trial is free, \$19.95 unlocks advanced features.

Frequent updates free support.



Vendor information

<http://www.shirt-pocket.com>

